

EXHIBIT A

MillerKnoll Canvas Workstation Finishes:

Frame Base Covers, Power/Data knockouts and No knockouts
98: studio white

Fabric Tiles, Tackable Fabric
1HA13: medley bayou

Frame Top Screen, Standard Top Cap, with Opal Etched Glass 1/4 thick, 11H

Extended Corner Table with C-Foot
3-legged
Color: 98: studio white
Squared edge
30" deep left x 30" deep right (29" surface size)
Back corner cut
71" wide left x 72" wide right (69" x 70" surface size) - 2-piece top with
Tight joint fasteners (seam on LH side approx. 22" in from end)
High-pressure laminate top/thermoplastic edge
Electric standard range
STS: simple up/down touch switch
LBR: phantom ecru
Grain direction to run on non-seamed side
NC: no cutout
57: glides

Personal Storage (1) per workstation
98: studio white
KA: keyed alike

Ped W-Pull, Mobile 20D B/F (1) per workstation
3/4-extension roller slides on box drawer, full-extension ball bearing on file drawer
Smooth paint on smooth steel
Color: 98: studio white
Keyed alike
No hand grip

Power accessories:
Canvas Dock, Power Module Top, Color: White (1) per workstation

Other power accessories:
Base Power Harness
Power Entry for use w/open base, New York City
P15 Amp Receptacle 4 Circuit, Duplex,
Power Jumper
Power Plug Strip

Geiger Offices Finishes:

- Veneer: 68 Reco Grain Walnut (worksurface, and open shelf)
- TFL: Black (Lower Storage)
- Fabric: Saille, Haze Black Metal Trim
- Hardware Facade in Black Matte
- Clamp on Power Module
- Wall Tile, Accepts Tile Above, Fabric
- Saille, Haze
- Frame mounted wall tile, with starter clip

Low Credenza Top, With Leg Grommet, Veneer, 24" deep, 0.75"

Cglv grommet included

Wood eased, 3/4" thick

Recograin walnut, flat cut, matte sheen

Matte black

Leg grommet 15" from right, back, Black grommet

Low Storage, 1 Box/1 File, TFL Case, 30" wide, 24" deep, 21.75" high

TFL, black

Facade pull, matte black

Walnut plywood drawer box, Walnut Pencil Tray

No power in top box drawer

Lock

Utility Cabinet, for Use with L Desk, Accepts 2 Legs, TFL Case and fronts,

8.875" deep, 22.5" high **Special Features** *No back access

Cutouts, finished back *Access cutout on right side only *T-motion

L desk on left, no storage, for use with desk 30" deep

With power shroud cutout and grommet

Matte black, Version T, TFL, black

Overhead Storage, Single Shelf, Full Back Panel, Veneer Shelf, Horizontal

Veneer Back Panel, 13.375" deep, 14.875" high with mirror

matched 15" veneer wall tile

Matte black

With LED light, Frame mounted, does not accept tile above

Reco grain walnut, flat cut, matte sheen

Modesty Panel, 51" wide, 0.75" deep, 12" high

TFL Black

Wall Frame, Wall Frame Top Cap, Single-Sided Wall, 2.625" deep, 0.125" high

Matte black

Plug Strip, Plug-in, Black, 10' Cord, 9-3/8" wide, 1-3/4" deep, 1-1/2" high

Installation Kits

Power Supply Kit, LED Lighting

Lock Cylinder Kit (Incl. 4 Lock Plug Cylinders - Keyed Alike)

Black Lock Plug

Floating Runoff Desk, Adjustable Height, Rectangular, Veneer top, Square

30" deep, 30" high **Special Features** *T-motion

Wood eased, 1 1/4" thick

Recograin walnut, flat cut, matte sheen

No power cutout/grommet, no power shroud

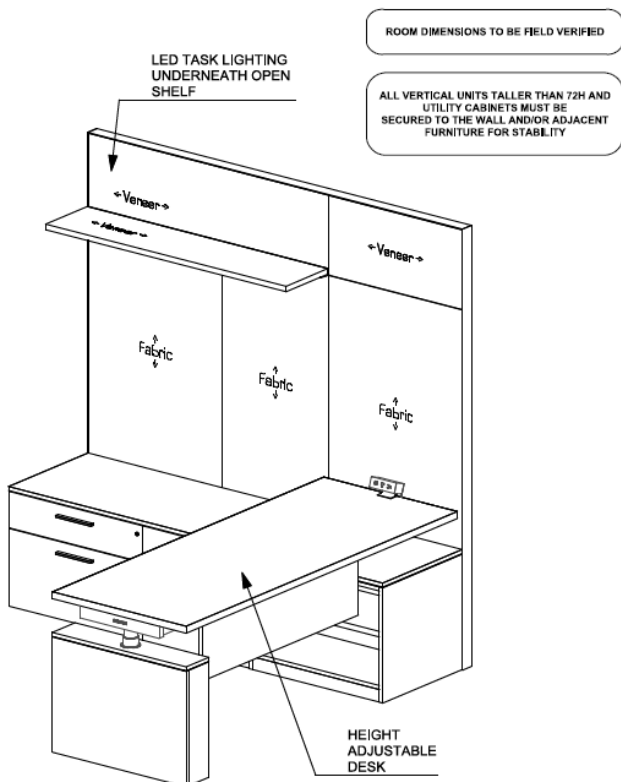
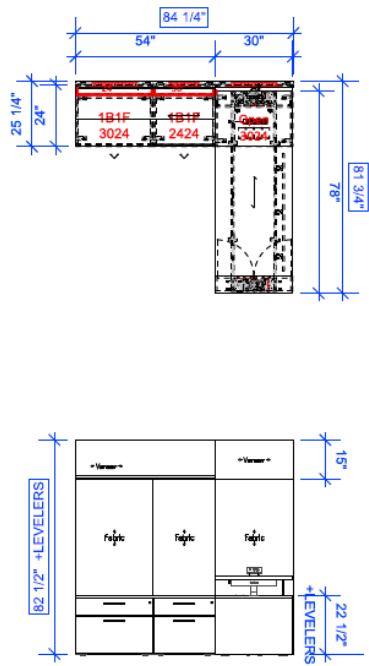
Leg support box, Matte black, Version T

Leg Support Box, Butt Joint TFL, 2 Doors, 30" wide, 6.5" deep, 22.5" high

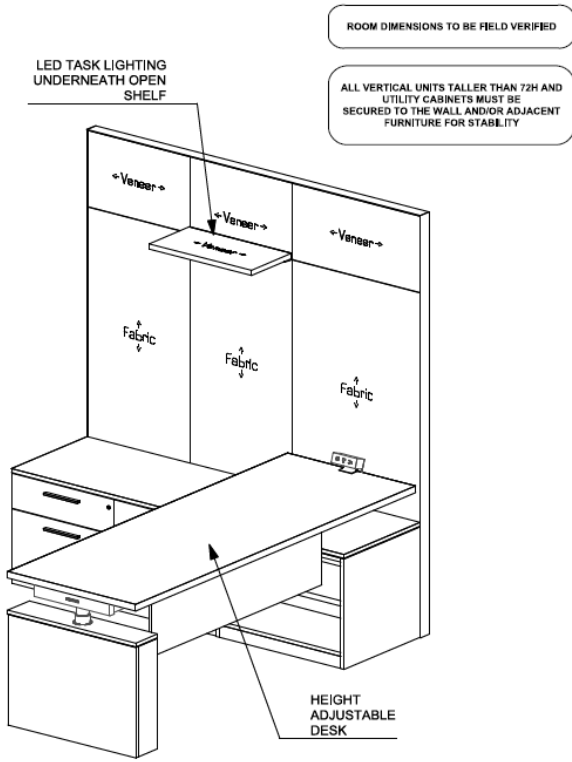
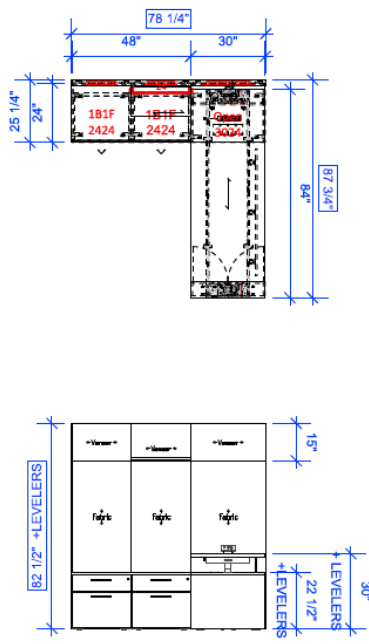
TFL, black

Matte black

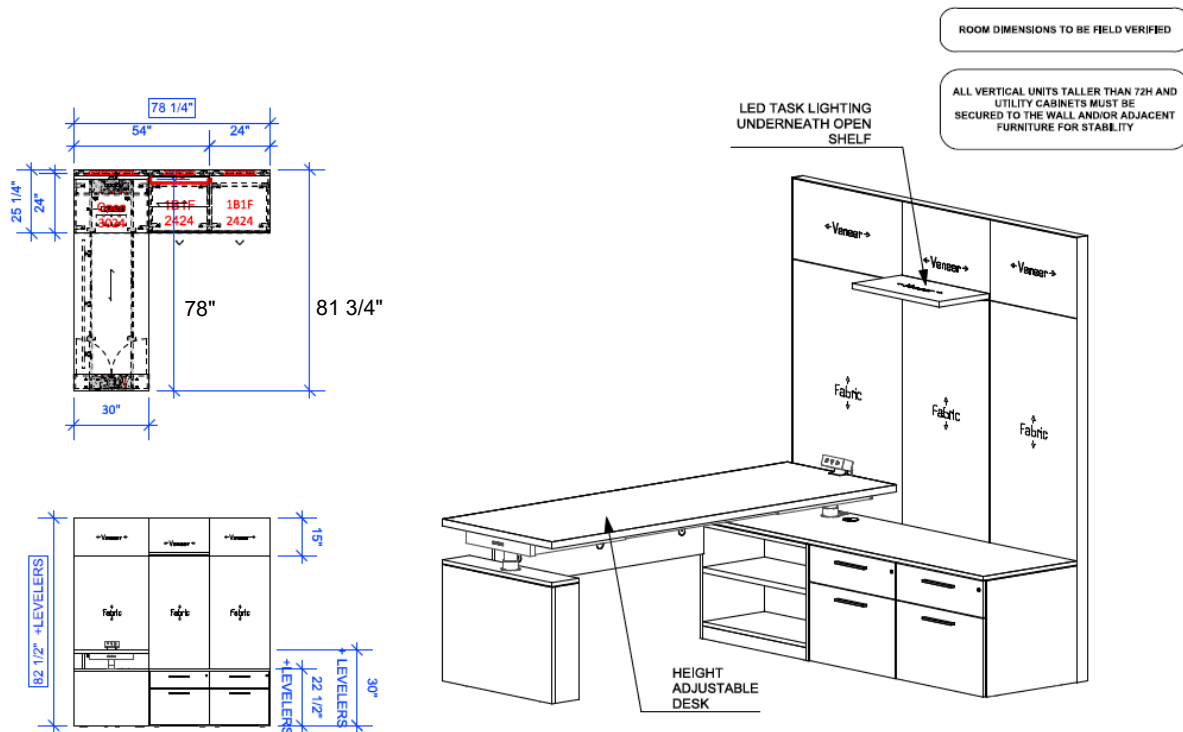
PO A-1:



PO A-2:



PO A-3:



Ancillary furniture:

- (1) Extended Corner Table with C-Foot
- (1) Personal Storage
- (1) Ped W-Pull, Mobile 20D B/F for the existing workstation with partitions