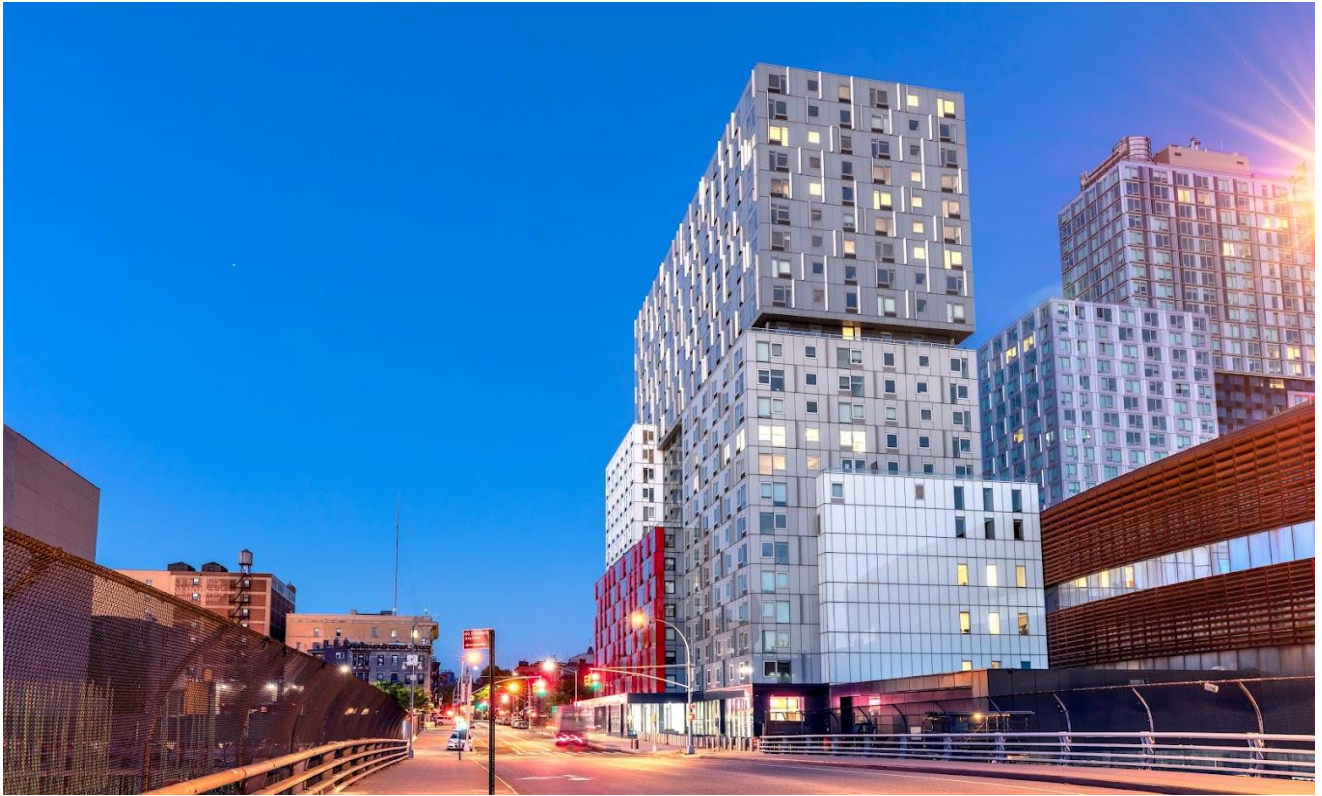


# Immediate Vacancies & Replenish Waiting List

## 38 SIXTH AVENUE AT PACIFIC PARK BROOKLYN

38 SIXTH AVENUE, PROSPECT HEIGHTS, BROOKLYN



**Amenities:** Fitness center, lounge, bike storage, terrace, children’s playroom [additional fees apply]

**Transit:** 2/3/4/5/D/N/R/B/Q/C, B37, B41, B45, B63, B65, B67, B69, B103

**No application fee • No broker’s fee • Pet FRIENDLY building**

Applications are now being accepted to replenish the waiting list. Individuals or households who meet the income and household size requirements listed in the table below may apply. Qualified applicants will be required to meet additional selection criteria such as asset limits.

### AVAILABLE UNITS AND INCOME REQUIREMENTS

Unit Size		Monthly Rent <sup>1</sup>		Household Size <sup>2</sup>	Annual Household Income <sup>3</sup> <i>Minimum – Maximum<sup>4</sup></i>
Studio	165%AMI MEDIAN AREA MEDIAN INCOME	\$2212 - \$2234	→	1 person 2 people	\$ 78,378 - \$179,355 \$ 78,378 - \$205,095
1 Bedroom		\$2736 - \$3009	→	1 person 2 people 3 people	\$ 96,686 - \$179,355 \$ 96,686 - \$205,095 \$ 98,686 - \$230,670
2 Bedroom		\$3293 - \$3297	→	2 people 3 people 4 people 5 people	\$ 116,640 - \$205,095 \$ 116,640 - \$230,670 \$ 116,640 - \$256,245 \$ 116,640 - \$276,705

<sup>1</sup> Rent includes gas for cooking. Tenant responsible for electricity.

<sup>2</sup> Household size includes everyone who will live with you, including parents and children. Subject to occupancy criteria.

<sup>3</sup> Household earnings includes salary, hourly wages, tips, Social Security, child support, and other income. Income guidelines subject to change.

<sup>4</sup> Minimum income listed may not apply to applicants with Section 8 or other qualifying rental subsidies. Asset limits also apply.

#### How Do You Apply?

Applications may be requested in person or by mailing a self-addressed envelope to:

**38 Sixth at Pacific Park  
38 6<sup>th</sup> Avenue 7<sup>th</sup> Floor  
Brooklyn, NY 11217**

**Attn: Angie Laguerre, Management office**

Applications may also be requested by emailing [38-6thmanagement@avanath.com](mailto:38-6thmanagement@avanath.com) or by calling (718) 362-8207.

Mayor Eric Adams • HPD Commissioner Adolfo Carrión Jr. • HDC President Eric Enderlin

