

Waiting List Open

Prospect Park South Portfolio

[91 East 18 Street, Brooklyn NY 11226](#)

[682 Ocean Avenue](#) and [816 Ocean Avenue](#), Brooklyn NY 11226

[280 East 21st Street](#), Brooklyn NY 11226

[221 Linden Boulevard](#) Brooklyn NY 11226



Transit: B/Q/2/5, B49

No application fee • No broker's fee • Pet Friendly building

Applications are now being accepted to replenish the waiting list. Individuals or households who meet the income and household size requirements listed in the table below may apply. Qualified applicants will be required to meet additional selection criteria such as asset limits.

AVAILABLE UNITS AND INCOME REQUIREMENTS

Unit Size		Monthly Rent ¹		Household Size ²	Annual Household Income ³ <i>Minimum – Maximum⁴</i>
Studio	123% AREA MEDIAN INCOME (AMI)	\$1,599 - \$2,860	→	1 person	\$57,360 - \$133,701
				2 people	\$57,360 - \$152,889
1 Bedroom		\$1,509 - \$3,061	→	1 person	\$54,618 - \$133,701
				2 people	\$54,618 - \$152,889
				3 people	\$54,618 - \$171,954
2 Bedroom		\$1,432 - \$3,665	→	2 people	\$52,835 - \$152,889
				3 people	\$52,835 - \$171,954
				4 people	\$52,835 - \$191,019
	5 people			\$52,835 - \$206,271	
3 Bedroom	\$2,386 - \$4,226	→	3 people	\$86,400 - \$171,954	
			4 people	\$86,400 - \$191,019	
			5 people	\$86,400 - \$206,271	
			6 people	\$86,400 - \$221,523	
			7 people	\$86,400 - \$236,898	
4 Bedroom	\$2,414 - \$4,702	→	4 people	\$88,252 - \$191,019	
			5 people	\$88,252 - \$206,271	
			6 people	\$88,252 - \$221,523	
			7 people	\$88,252 - \$236,898	
			8 people	\$88,252 - \$252,150	
			9 people	\$88,252 - \$267,675	
1 Bedroom	80 AMI% AREA MEDIAN INCOME	\$1,828	→	1 person	\$65,555 - \$86,960
				2 people	\$65,555 - \$99,440
				3 people	\$65,555 - \$111,840
3 Bedrooms	60 AMI% AREA MEDIAN INCOME	\$2,337	→	3 people	\$84,720 - \$111,840
				4 people	\$84,720 - \$124,240
				5 people	\$84,720 - \$134,160
				6 people	\$84,720 - \$144,080
				7 people	\$84,720 - \$154,080
1 Bedroom	60 AMI% AREA MEDIAN INCOME	\$1,556	→	1 person	\$56,229 - \$65,220
				2 people	\$56,229 - \$74,580
				3 people	\$56,229 - \$83,880

¹ Tenants responsible for electricity, including electric stoves in some units

² Household size includes everyone who will live with you, including parents and children. Subject to occupancy criteria.

³ Household earnings includes salary, hourly wages, tips, Social Security, child support, and other income. Income guidelines subject to change.

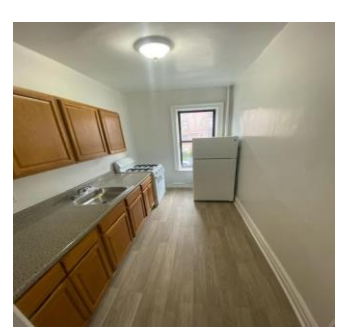
⁴ Minimum income listed may not apply to applicants with Section 8 or other qualifying rental subsidies. Asset limits also apply.

How Do You Apply?

Applications may be requested in person or by mailing a self-addressed envelope to:

Twin Pines Management
1201 Broadway, Suite 401
New York, NY 10001
Attn: PPSP Leasing

Applications may also be requested by emailing ppsp@twinpinesmgmt.com or by calling **917-410-6667**



Mayor Eric Adams • HPD Commissioner Adolfo Carrión Jr. • HDC President Eric Enderlin

