

Waiting List Open

HUNTER'S POINT SOUTH LIVING

1-50 50TH AVENUE & 1-55 BORDEN AVENUE, LONG ISLAND CITY, QUEENS



Amenities: 24-hour attended lobby, on-site resident manager, party room*, outdoor terrace*, gym*, tech center*, playroom*, bike room*, storage* and Urban Farm* (*additional fees apply).


Transit: 7, E, G, M, LIRR, Q67, East River Ferry

No application fee • No broker's fee • Smoke-free building

A PERCENTAGE OF UNITS ARE SET ASIDE FOR APPLICANTS WITH MOBILITY IMPAIRMENTS (5%) AND VISUAL OR HEARING IMPAIRMENTS (2%)

Applications are now being accepted to replenish the waiting list for the visual/hearing-adapted set-aside units. This building was constructed through the Mixed Income Program of the New York City Housing Development Corporation and of the New York City Department of Housing Preservation and Development. Individuals or households who meet the income and household size requirements listed in the table below may apply. Qualified applicants will be required to meet additional selection criteria such as asset limits.

AVAILABLE UNITS AND INCOME REQUIREMENTS

Unit Size	Monthly Rent ¹	Disability Designation		Household Size ²	Annual Household Earning ^{3, 4}
165% AREA MEDIAN INCOME (AMI) UNITS					
Studio	\$1,720	Visual/Hearing Impairment		1 person	\$61,508 - \$163,185
				2 people	\$61,508 - \$186,450

¹ Rent includes gas for heat and cooking. Tenant responsible for electricity.

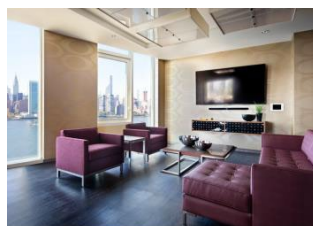
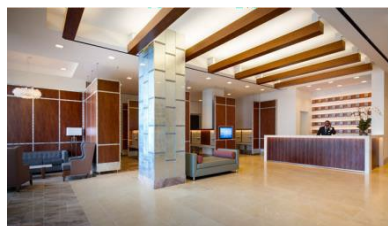
² Household size includes everyone who will live with you, including parents and children. Subject to occupancy criteria.

³ Household earnings includes salary, hourly wages, tips, Social Security, child support, and other income. Income guidelines subject to change.

⁴ Minimum income listed may not apply to applicants with Section 8 or other qualifying rental subsidies. Asset limits also apply.

How Do You Apply?

Applications may be requested by emailing HPSInquiries@Related.com.



Mayor Eric Adams • HPD Commissioner Adolfo Carrión Jr • HDC President Eric Enderlin