

# Middle Income Housing for Rent

## HUNTER'S POINT SOUTH LIVING

**1-50 50<sup>TH</sup> AVENUE & 1-55 BORDEN AVENUE, LONG ISLAND CITY, QUEENS**



**Amenities:** 24-hour attended lobby, on-site resident manager, party room\*, outdoor terrace\*, gym\*, tech center\*, playroom\*, bike room\*, storage\* and Urban Farm\* (\*additional fees apply).

**Transit:** 7, E, G, M, LIRR, Q67, East River Ferry

**No application fee • No broker's fee • Smoke-free building**

Applications are now being accepted for available mobility/visual/hearing-adapted rental apartments and to replenish the waiting list of apartments at Hunter's Point South Living located at 1-50 50th Avenue & 1-55 Borden Avenue in the Long Island City neighborhood of Queens. This building was constructed through the Mixed Income Program of the New York City Housing Development Corporation and of the New York City Department of Housing Preservation and Development. Applicants will be required to meet income guidelines and additional selection criteria to qualify.

### AVAILABLE UNITS AND INCOME REQUIREMENTS

Unit Size	Monthly Rent <sup>1</sup>	Disability Designation		Household Size <sup>2</sup>	Annual Household Earning <sup>3, 4</sup>
<b>165% AREA MEDIAN INCOME (AMI) UNITS</b>					
<b>Studio</b>	\$1,653	Visual/Hearing Impairment	➔	1 person 2 people	\$ 58,869 - \$154,110 \$ 58,869 - \$176,220
<b>Studio</b>	\$1,798	Mobility Impairment	➔	1 person 2 people	\$ 63,840 - \$154,110 \$ 63,840 - \$176,220
<b>Studio</b>	\$2,099	Visual/Hearing Impairment	➔	1 person 2 people	\$ 74,160 - \$154,110 \$ 74,160 - \$176,220
<b>230% AREA MEDIAN INCOME (AMI) UNITS</b>					
<b>2 Bedroom</b>	\$4,193	N/A	➔	2 people 3 people 4 people 5 people	\$146,949 - \$245,640 \$149,949 - \$276,320 \$146,949 - \$306,820 \$146,949 - \$331,430

<sup>1</sup> Rent includes gas for heat and cooking. Tenant responsible for electricity.

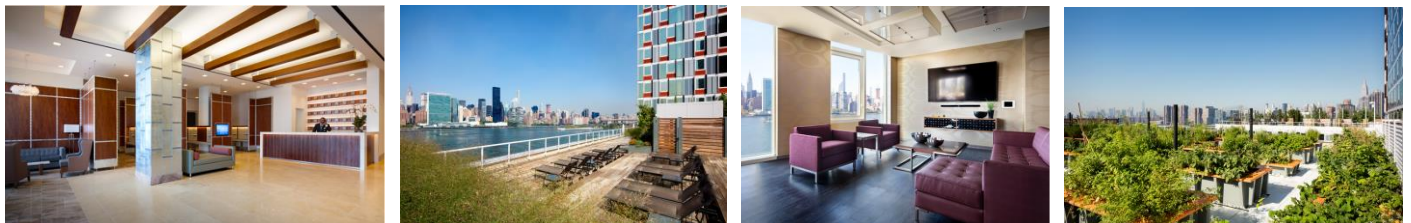
<sup>2</sup> Household size includes everyone who will live with you, including parents and children. Subject to occupancy criteria.

<sup>3</sup> Household earnings includes salary, hourly wages, tips, Social Security, child support, and other income. Income guidelines subject to change.

<sup>4</sup> Minimum income listed may not apply to applicants with Section 8 or other qualifying rental subsidies. Asset limits also apply.

### How Do You Apply?

Applications may also be requested by emailing [HPSInquiries@Related.com](mailto:HPSInquiries@Related.com).



Mayor Eric Adams • HPD Commissioner Adolfo Carrión Jr. • HDC President Eric Enderlin

