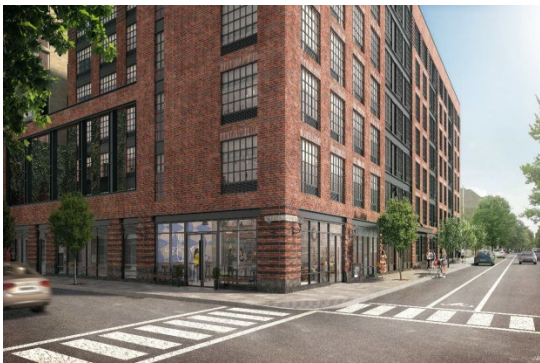


Middle Income Housing for Rent

33 EAGLE STREET

33 EAGLE STREET, GREENPOINT, BROOKLYN



Amenities: On-site superintendent, laundry room, bicycle room, fitness center, and landscaped community courtyard.

Transit: *Trains:* G and 7; *Buses:* B32

No application fee • No broker's fee • Smoke-free building

Applications are now being accepted to fill vacancies and replenish the waiting list. This building was constructed through the LAMP/ Mixed Income Programs of the New York City Housing Development Corporation (HDC) and the Inclusionary Housing Program of the New York City Department of Housing Preservation and Development (HPD). Individuals or households who meet the income and household size requirements listed in the table below may apply. Qualified applicants will be required to meet additional selection criteria such as asset limits.

AVAILABLE UNITS AND INCOME REQUIREMENTS

Unit Size	130% AREA MEDIAN INCOME	Monthly Rent ¹		Household Size ²	Annual Household Income ³ <i>Minimum – Maximum⁴</i>
2 Bedroom		\$2,282	→	2 people 3 people 4 people 5 people	\$81,429 – \$124,150 \$81,429 – \$139,620 \$81,429 – \$155,090 \$81,429 – \$167,570

¹ Rent includes gas for cooking.

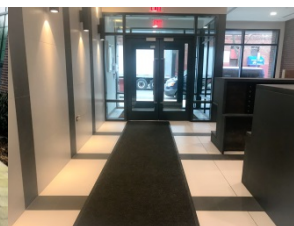
² Household size includes everyone who will live with you, including parents and children. Subject to occupancy criteria.

³ Household earnings includes salary, hourly wages, tips, Social Security, child support, and other income. Income guidelines subject to change.

⁴ Minimum income listed may not apply to applicants with Section 8 or other qualifying rental subsidies. Asset limits also apply.

How Do You Apply?

Applications may be requested by emailing apply@ccmanagers.com or by calling 212-348-3248 ext.152



Mayor Bill de Blasio • HPD Commissioner Louise Carroll • HDC President Eric Enderlin

