

Affordable Housing for Rent:

2216 Frederick Douglas Blvd, Harlem NYC
 2212 Frederick Douglas Blvd, Harlem NYC
 268 West 120th Street, Harlem NYC
 211 West 117th Street, Harlem NYC
 444 Manhattan Avenue, Harlem NYC



Amenities: Doorman, gym, tenant lounge, kid's playroom, rooftop, courtyard, laundry*

*Amenities vary depending on building

Transit: A, B, C, D

No application fee • No broker's fee

Applications are now being accepted to fill vacancies and replenish the waiting list. This building was constructed through the NHOP Program of the New York City Housing Development Corporation. Individuals or households who meet the income and household size requirements listed in the table below may apply. To maximize the utilization of affordable units, married or similarly committed couples are not eligible for 2 bedroom units. Qualified applicants will be required to meet additional selection criteria such as asset limits.

AVAILABLE UNITS AND INCOME REQUIREMENTS

Unit Size	250% AMI	Monthly Rent ¹		Household Size ²	Annual Household Income ³ <i>Minimum – Maximum⁴</i>
2 Bedroom		\$2,745* - \$4,095	→	2 people 3 people 4 people	\$91,590 - \$260,750 \$91,590 - \$260,750 \$91,590 - \$260,750

¹Rents reflect net effective for units offering concessions

²Rents and incomes listed reflect a range of availability. Please inquire for further detail.

¹ Rent includes heat, hot water, and gas

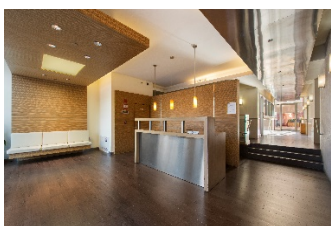
² Household size includes everyone who will live with you, including parents and children. Subject to occupancy criteria.

³ Household earnings includes salary, hourly wages, tips, Social Security, child support, and other income. Income guidelines subject to change.

⁴ Asset limit of \$260,750 also applies.

How Do You Apply?

Applications may be requested by emailing rent@gonofee.com or by calling 212-360-5092 x2



Mayor Bill de Blasio • HPD Commissioner Maria Torres-Springer • HDC President Eric Enderlin

