

# Middle Income Rental Units

## Arabella-101 Avenue D Associates, LLC

101 Avenue D, New York, NY 10009, Lower East Side/East Village, Manhattan



**Amenities:** Gym, roof deck, laundry room, bike storage, game room, package room, live-in super

**Transit:** Subway - L, F and 6; Buses M8, M9, M14D and M21

**No application fee • No broker's fee • Pet friendly building**

Applications are now being accepted to fill vacancies and replenish the waiting list. This building was constructed through the New Housing Opportunities (NHOP) Program of the New York City Housing Development Corporation. Individuals or households who meet the income and household size requirements listed in the table below may apply. Qualified applicants will be required to meet additional selection criteria such as asset limits.

### AVAILABLE UNITS AND INCOME REQUIREMENTS

Unit Size	175 % AREA MEDIAN INCOME (AMI) UNITS	Monthly Rent <sup>1</sup>		Household Size <sup>2</sup>	Annual Household Income <sup>3</sup> <i>Minimum – Maximum<sup>4</sup></i>
1 Bedroom		\$2,090	→	1 person 2 people 3 people	\$73,680 - \$130,725 \$73,680 - \$149,450 \$73,680 - \$168,175
1 Bedroom		\$2,122	→	1 person 2 people 3 people	\$74,778 - \$130,725 \$74,778 - \$149,450 \$74,778 - \$168,175

<sup>1</sup> Rent includes cooking gas. Tenants responsible for electricity.

<sup>2</sup> Household size includes everyone who will live with you, including parents and children. Subject to occupancy criteria.

<sup>3</sup> Household earnings includes salary, hourly wages, tips, Social Security, child support, and other income. Income guidelines subject to change.

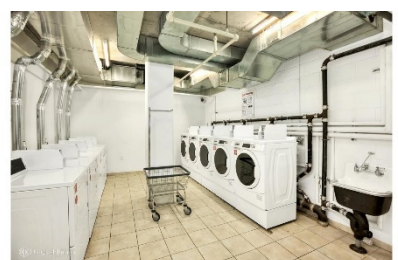
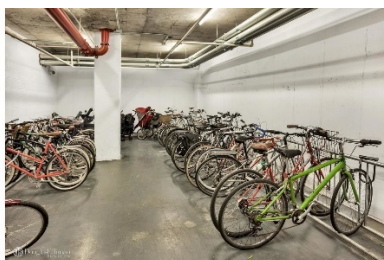
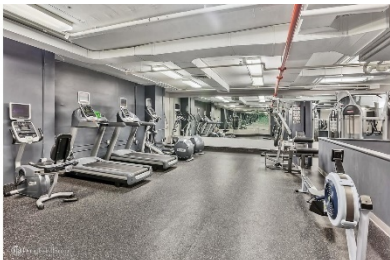
<sup>4</sup> Minimum income listed may not apply to applicants with Section 8 or other qualifying rental subsidies. Asset limits also apply.

### How Do You Apply?

Applications may be requested in person or by mailing a self-addressed envelope to:

**Arabella c/o CMP Consultants, Inc.  
PO Box 1678  
Valley Stream, NY 11582**

Applications may also be requested by emailing [101avenued@cmpconsultants.com](mailto:101avenued@cmpconsultants.com)



Mayor Bill de Blasio • HPD Commissioner Louise Carroll • HDC President Eric Enderlin

