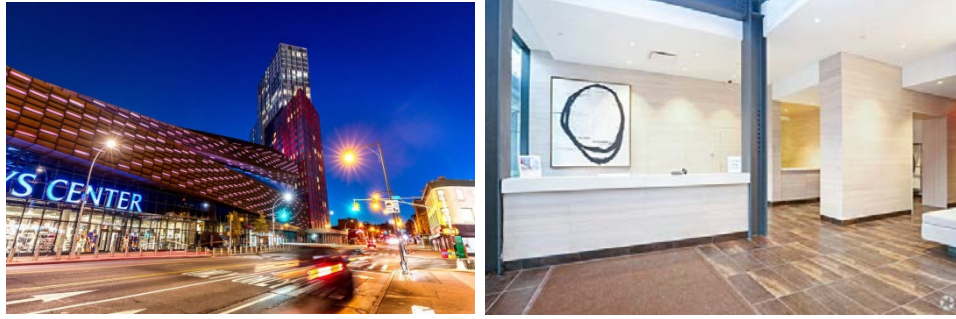


# Waiting List Open for Middle Income Rental Units

## 461 DEAN AT PACIFIC PARK BROOKLYN

461 Dean Street, Prospect Heights, Brooklyn



**Amenities:** 24-hour attended lobby, on-site resident manager, washer and dryers in each unit, fitness center†, private dining room†, lounge†, terrace†, children’s play room†, game room†, art studio† (†additional fees apply).

**Transit:** 2/3/4/5/D/N/R/B/Q/C B65, B45, B69, B41, B67

**No application fee • No broker’s fee • Pet FRIENDLY building**

Applications are now being accepted to fill vacancies and replenish the waiting list. This building was constructed through the Mixed-Income Program of the New York City Housing Development Corporation. Individuals or households who meet the income and household size requirements listed in the table below may apply. Qualified applicants will be required to meet additional selection criteria such as asset limits.

### AVAILABLE UNITS AND INCOME REQUIREMENTS

1. View the Available Units...			→	2. See Unit Requirements	
Unit Size	140 % AREA MEDIAN INCOME (AMI) UNITS	Monthly Rent <sup>1</sup>		Household Size <sup>2</sup>	Annual Household Income <sup>3</sup> <i>Minimum – Maximum<sup>4</sup></i>
Studio		\$1,588	→	1 person 2 people	\$56,846.00 - \$104,580.00 \$56,846.00 - \$119,560.00
1 Bedroom		\$1,994	→	1 person 2 people 3 people	\$70,938.00 - \$104,580.00 \$70,938.00 - \$119,560.00 \$70,938.00 - \$134,540.00
Unit Size	160 % AREA MEDIAN INCOME (AMI) UNITS	Monthly Rent <sup>1</sup>		Household Size <sup>2</sup>	Annual Household Income <sup>3</sup> <i>Minimum – Maximum<sup>4</sup></i>
Studio		\$2,025	→	1 person 2 people	\$71,829.00 - \$119,520.00 \$71,829.00 - \$136,640.00
1 Bedroom		\$2,541	→	1 person 2 people 3 people	\$89,692.00 - \$119,520.00 \$89,692.00 - \$136,640.00 \$89,692.00 - \$153,760.00

<sup>1</sup> Rent includes heat and hot water. Tenant pays for electricity

<sup>2</sup> Household size includes everyone who will live with you, including parents and children. Subject to occupancy criteria.

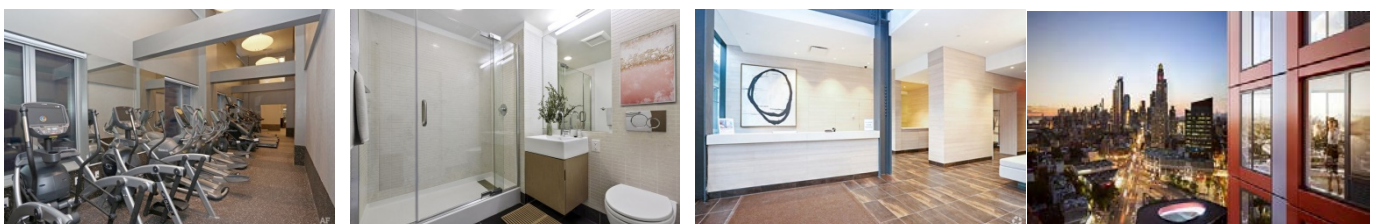
<sup>3</sup> Household earnings includes salary, hourly wages, tips, Social Security, child support, and other income. Income guidelines subject to change.

#### How Do You Apply?

Applications may be requested in person or by mailing a self-addressed envelope to:

**461 Dean at Pacific Park, One Metro Tech North, 11<sup>th</sup> Floor, Brooklyn, NY 11201.**

Applications may also be requested by emailing [461Dean@mutualhousingny.org](mailto:461Dean@mutualhousingny.org) or by calling **718-246-8080** extension 224



Mayor Bill de Blasio • HDC President Eric Enderlin

